

ALUMNI EVENT

Akademické konferenční
centrum
Husova 4a
Praha 1, 110 00

28. 9. 2019

10:30 AKC opening

11:00 Welcome word

Academic mobility – Fulbright scholarship

11:10 Mentee Pavla Hubálková – My Fulbright experience

11:25 Mentee Vanda Černožorská – A tale of two cities: living my best Fulbright life between the streets of Brooklyn and Yale lecture halls

11:40 Discussion

12:00 lunch – will be provided

Academic work and parenthood

12:45 Mentee Andrea Beláňová – Family and career: It's all about the people

13:00 Mentee Klára Hulíková – Family-work balance: a very personal way to it

13:15 Discussion

13:30 coffee break

Intersectoral mobility of PhD holders

13:45 Hedvika Kadlecová – Comparing academic work and the private sector

14:00 Marie Syrovátková – Vibrating and fast-paced mainstream reality in commercial human research

14:15 Václav Petrák – Don't be afraid of leaving academia

14:30 Roman Matoušek – From (applied) research to policy making (and back again)

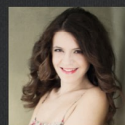
14:45 Discussion

15:15 Closing



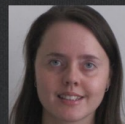
Institute of Sociology
Czech Academy of Sciences

Bios of Intersectoral mobility of PhD holders session speakers



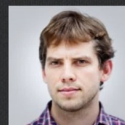
Hedvika Kadlecová

Hedvika Kadlecová, Ph.D. studied Theoretical Physics at Charles University in Prague. She is a Junior Researcher at Eli-Beamlines at the Institute of Physics, Czech Academy of Science. In 2019 she received the L'Oréal UNESCO award for women in science.



Marie Syrovátková

Marie Syrovátková, Ph.D. got her degree in Social geography and regional development at the Faculty of Science, Charles University in Prague. Currently she is the Business insight and expansion analyst at McDonald's ČR.



Václav Petrák

Václav got his Ph.D. degree at Czech Technical University in Prague where he studied biomedical applications of a lab-created diamonds. He is currently working on the development of materials for laser-adjustable intraocular lenses in Medicem Institute.



Roman Matoušek

RNDr. Roman Matoušek, Ph.D. obtained his Ph.D. in social geography at Charles University in Prague and worked as assistant professor at the same department. He had been working with the Agency for Social Inclusion at the Office of the Government of the Czech Republic from 2014 to 2018. Currently he is the Head of Research and Evaluation Unit of the Agency.